



TRAPS.CO.NZ

Tracking Tunnel Assembly & Use

1. Begin by placing the tunnel down on a flat surface. Fold all the creases on the tracking tunnel by placing each crease along the end of the table and folding until all are folded.



2. Fit the three extended pieces by folding the tunnel until each lug meets in the correct slot.

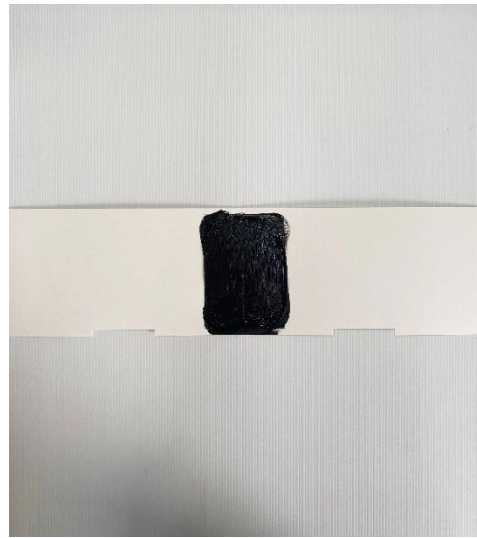


3. Once finished with the three, place the remaining two lugs on the other side into the correct slots. Once completed you have the finished product.



Inking the Tracking Card

1. Remove lid from bottle and apply pressure to sponge on the indicated square, begin smearing ink by using 1 ml to cover the squares surface area. A thick coat of ink should be applied, remember to take into consideration your environment, temperature/weather and how long cards will be outside for when trying to gather data.



2. For bait, peanut butter for rodents and canned fish, raw meat or uncooked eggs for stoats or weasels. Simply place your bait in the middle of the inked square.
3. When Collecting tracking cards, fold them in half to prevent tracks from smudging and ink getting on other objects.

